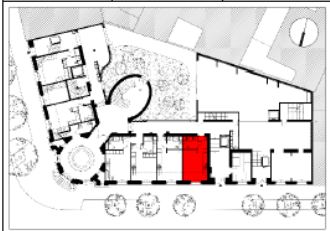
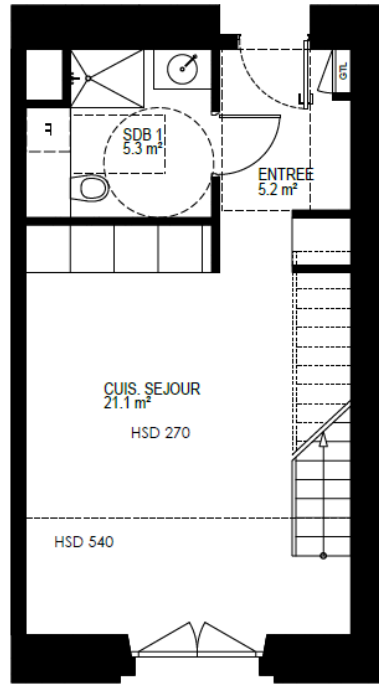


# RESIDENCE LEON DUFOUR

étage	type	logement
ENTRESOL	<b>T3 duplex</b>	<b>B01 niv. bas</b>



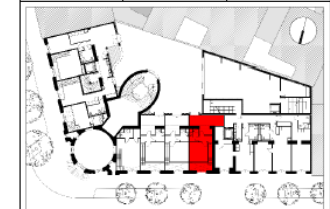
ENTREE	5,20
SALLE DE BAIN 1	5,30
CUISINE / SEJOUR	21,10
TOTAL SURFACE HABITABLE DE L'ETAGE	31,60
TOTAL SURFACE HABITABLE DU LOGEMENT	69,30



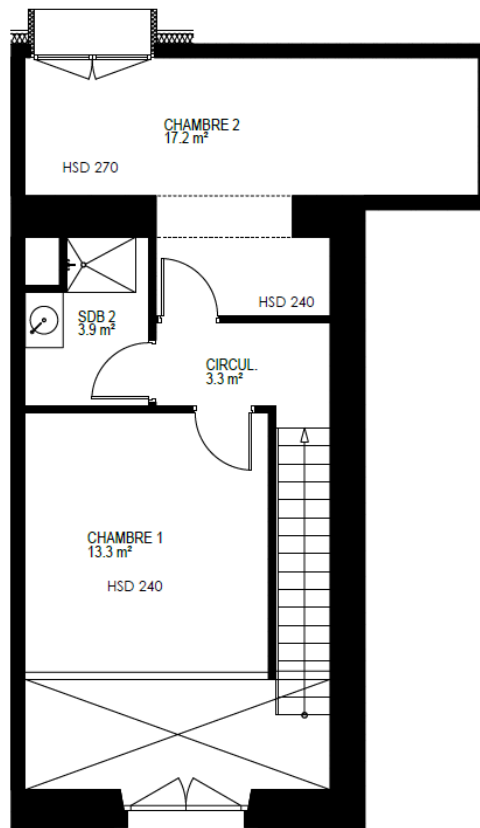
0 3m

# RESIDENCE LEON DUFOUR

étage	type	logement
NIVEAU 1	<b>T3 duplex</b>	<b>B01 niv. ht</b>



CIRCULATION	3,30
SALLE DE BAIN 2	3,90
CHAMBRE 1	13,30
CHAMBRE 2	17,20
TOTAL SURFACE HABITABLE DE L'ETAGE	37,70
TOTAL SURFACE HABITABLE DU LOGEMENT	69,30



0 3m

B0,1  
Type T3 – RDC/1  
Surface: 69,30 m<sup>2</sup>

Foncier: 143 000 €

Travaux : 210 291 €

**Prix Total : 353 291 €**

Quote part déficit Foncier : 73 602 €

Quote part Pinel : 279 689€