



Les Belles
Residences



Lagoa

3 & 5 Avenue de la Gare, Le Teich

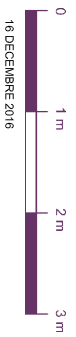
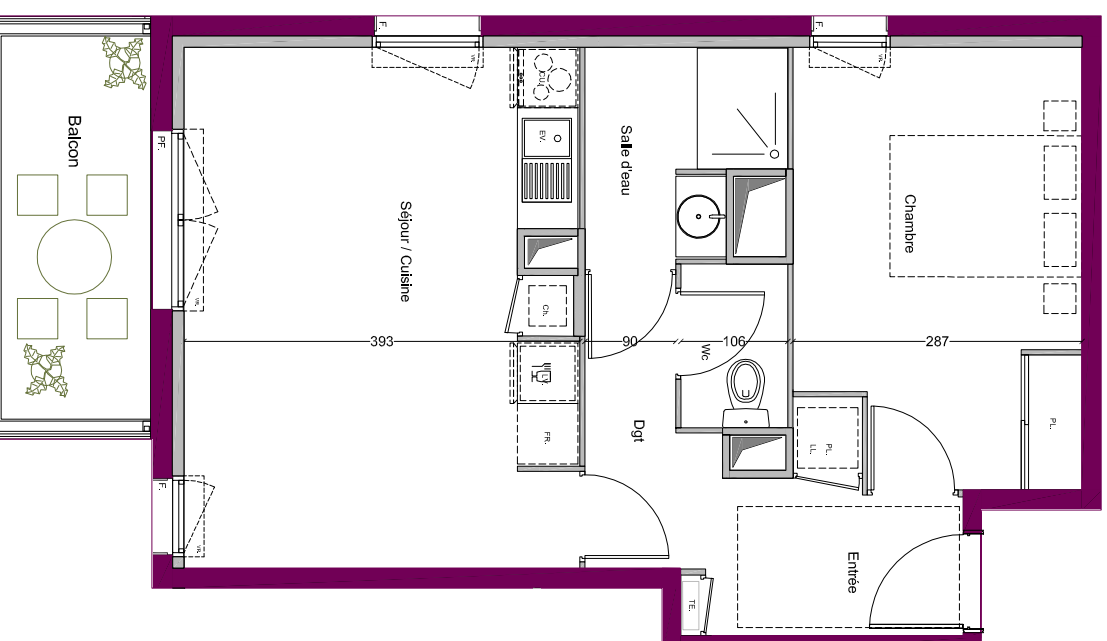
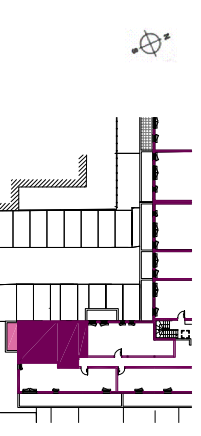
SURFACES HABITABLES :

Entrée / Dégagement	7,63 m ²
Séjour / Cuisine	19,92 m ²
Chambre	11,83 m ²
Salle d'eau	3,75 m ²
Wc	1,72 m ²

SURFACE TOTALE HABITABLE 44,85 m²

Balcon 6,46 m²

PLAN DE REPERAGE:



LEGENDE:

T.E.	TABEAUELECTRIQUE	PI.	PLACARD
P.F.	PORTE-FENETRE	Rob.	ROBINET
F.	FENETRE	V.R.	VOLETTROUVANT
CH.	CHAUDIERE	E.V.	EVER
FR.	REFRIGERATEUR	L.L.	LAVE-LINGE
L.V.	LAVE-VAISSELLE	CU.	CUISSON
FAUX-PLAFOND SOFFITE			
GAINES TECHNIQUES			

SEUILS:

