



Les Belles Residences



Lagoa

3 & 5 Avenue de la Gare, Le Teich

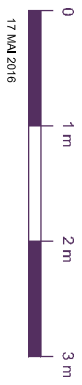
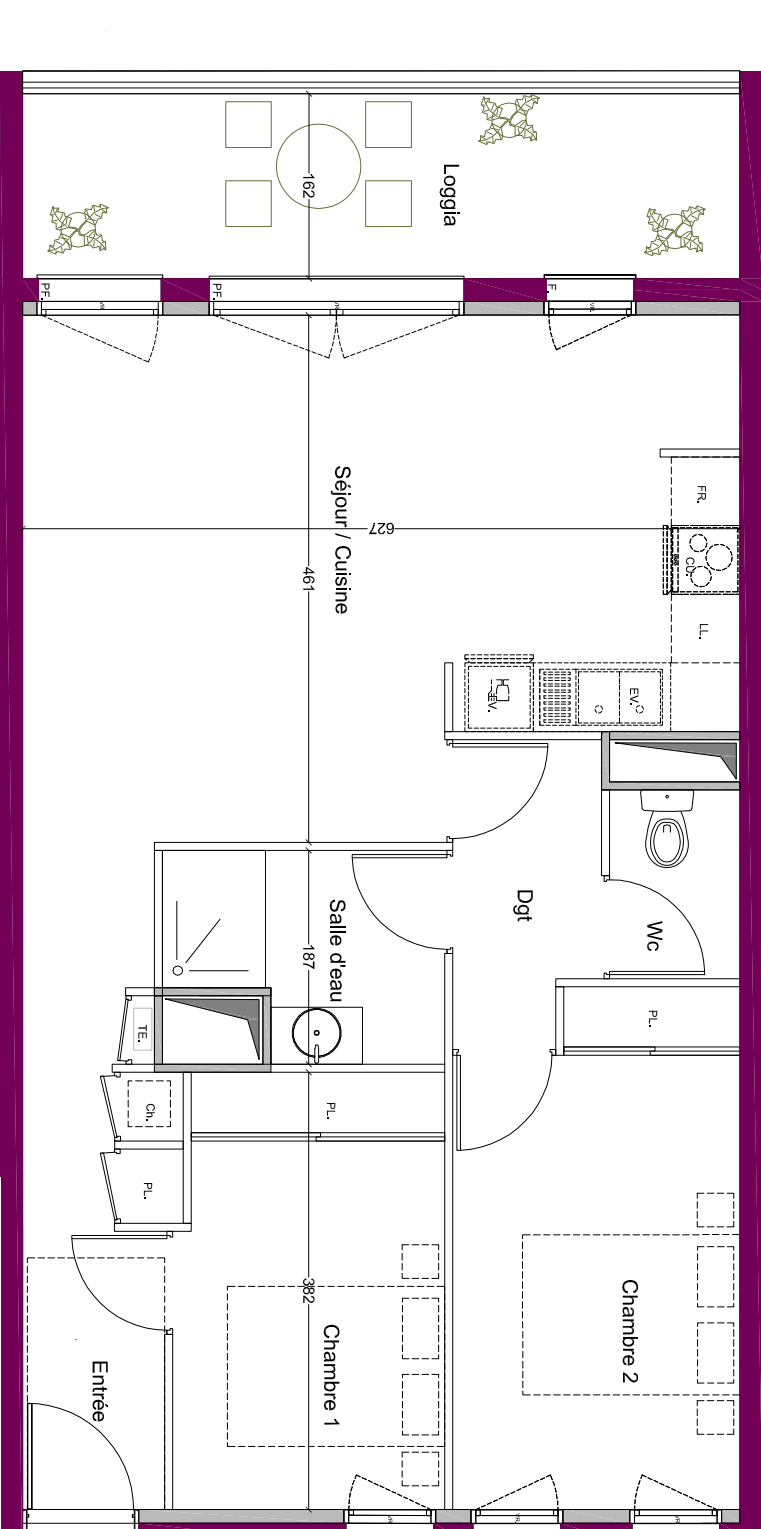
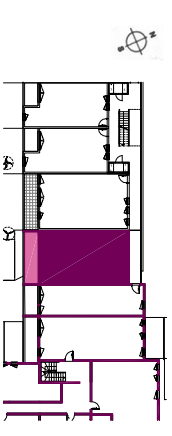
SURFACES HABITABLES :

Entree	5,53 m ²
Dégagement	3,28 m ²
Séjour / Cuisine	27,79 m ²
Chambre 1	9,07 m ²
Chambre 2	10,90 m ²
Salle d'eau	4,00 m ²
Wc	1,85 m ²

SURFACE TOTALE HABITABLE **62,42 m²**

Loggia 10,13 m²

PLAN DE REPERAGE:



LEGENDE:

T.E.	TABEAUELECTRIQUE	PI.	PLACARD
P.F.	PORTE-FENETRE	Rob.	ROBINET
F.	FENETRE	V.R.	VOLETRULANT
CH.	CHAUDIERE	L.V.	LAVE-VAISSELLE
FR.	REFRIGERATEUR	L.L.	LAVE-LINGE
L.V.	LAVE-VAISSELLE	CU.	CUISSON

SEUILS:

